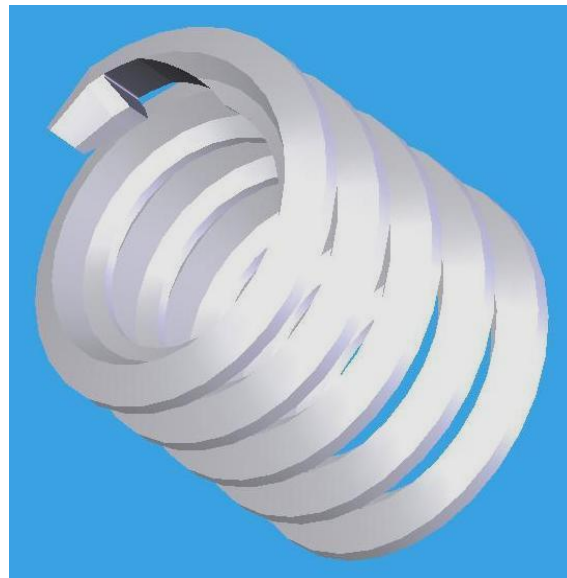




Drive Notch Wire Thread Inserts (DN™)



Product Introduction

Spirallock DN™ Specifications

Ordering Code	96070DN-	301-	B
	EDP Number Size and Length See Chart #1	Plating See Chart #2	Packaging Strip or Bulk
Chart #1 - EDP Numbers			
Size*	1 Dia.	1.5 Dia.	2 Dia.**
4-40	96020DN	96021DN	96022DN
6-32	96070DN	96071DN	96072DN
8-32	96000DN	96001DN	96002DN
10-32**	96100DN	96101DN	96102DN
Chart #2 - Plating Options			
-301	Cadmium per QQ-P-416, Type II		
-310	Silver per AMS 2410		
-352	Dry Film Lubricant per AS5272		
	Unplated (if plating option not specified)		



*These are currently available sizes; more fractional and metric sizes are being developed and will be supplied in the near future

** Please call for availability

Example: 96070DN-301-B

#6-32 x 1 dia. long, Cadmium plated, drive notch style, bulk packaging

Example: 96000DN-S

#8-32 x 1 dia long, unplated, drive notch style, strip packaging

Benefits of using DN™ Wire Thread Inserts:

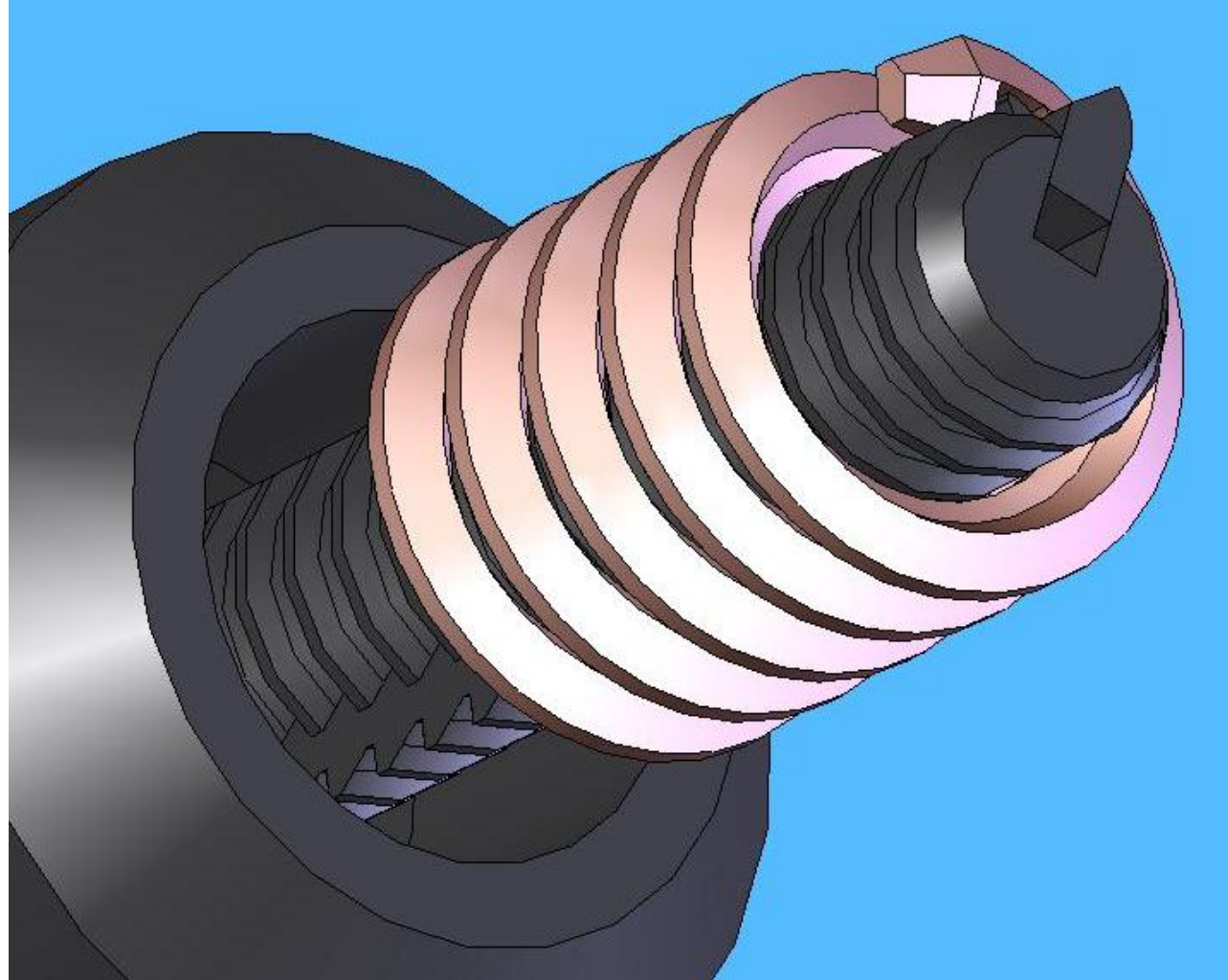


Similarly to Spirallock tanged wire thread inserts, our Drive Notch Wire Thread Inserts install into an STI tapped hole and accept standard bolts. In addition to being resistant to loosening under vibration, shock and thermal extremes, **DN™ Wire Thread Inserts** offer the following benefits:

- **improvement in quality**
- **speed of installation**
- **labor cost savings due to elimination of the breaking off tangs, retrieval and accounting for them**
- **elimination of potential foreign object damage or short-circuiting of electronics by loose tangs**
- **prevention of harm to expensive castings by invasive tang removal techniques**
- **elimination of messy and environmentally unfriendly chemicals or adhesives**



DN™ Installation Tools





DN™ Installation Tools – Pneumatic Assembly



Front End
Assembly

Adapter

Air Motor





DN™ Installation Tools – Electric Assembly



Small driver



Transformer



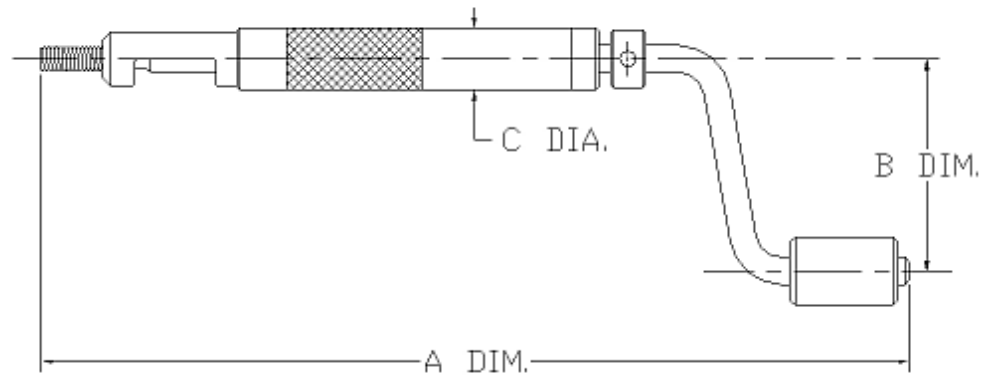
Large driver



Drive Notch
Installation Tool



DN™ Installation Tools – Manual Assembly



Size	Part Number	"A" Dimension	"B" Dimension	"C" Dimension
4-40	9602-MPW-DN	7-15/32	2-9/32	3/8
6-32	9607-MPW-DN	7-15/32	2-9/32	3/8
8-32	9600-MPW-DN	7-15/32	2-9/32	3/8
10-32	9610-MPW-DN	7-15/32	2-9/32	1/2